

VALEO II AL

SILICON NITRIDE

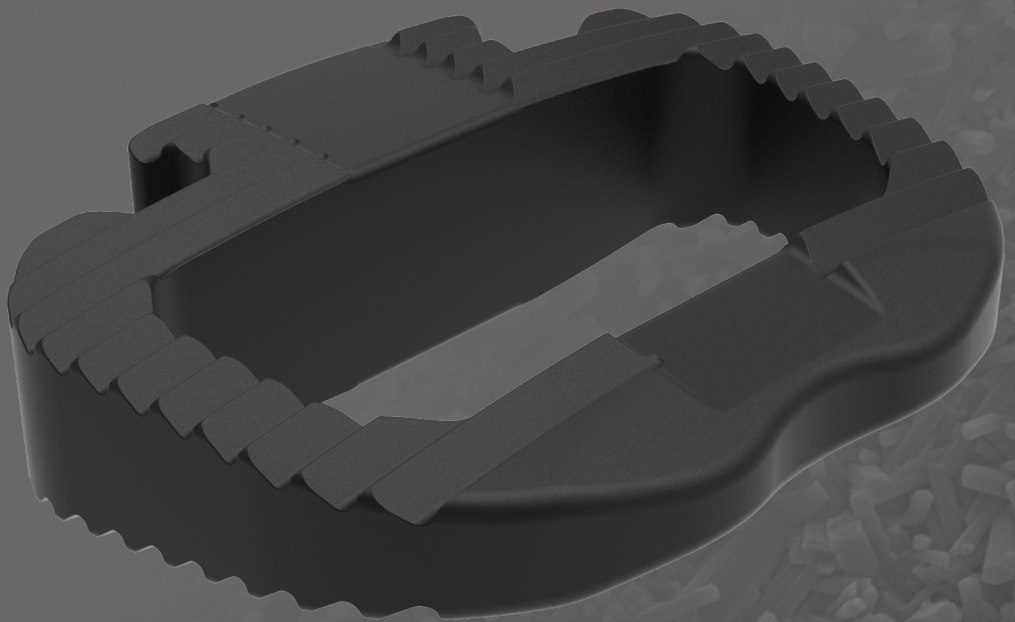
ANTERIOR LUMBAR
INTERBODY FUSION DEVICES

In the race to achieve interbody fusion, material matters. And no material fosters an environment for faster fusion like silicon nitride. Featuring the ability to achieve superior new bone growth and osseointegration, along with proven bacteriostatic properties and enhanced imaging attributes, silicon nitride outperforms PEEK and titanium.

Nanotopography enhances osteoblast response, initiating **faster fusion**

Optimal material density enables radiotranslucent and **reduced artifact imaging**

Surface chemistry generates **bacteriostatic properties**



IMPLANT FOOTPRINTS AND SIZES

FOOTPRINTS:

- 30x24mm [8°]
- 36x28mm [8°, 12°]
- 39x30mm [8°, 12°]

HEIGHTS:

10-15mm, 1mm increments

* 17mm available for 36x28mm & 39x30mm footprints



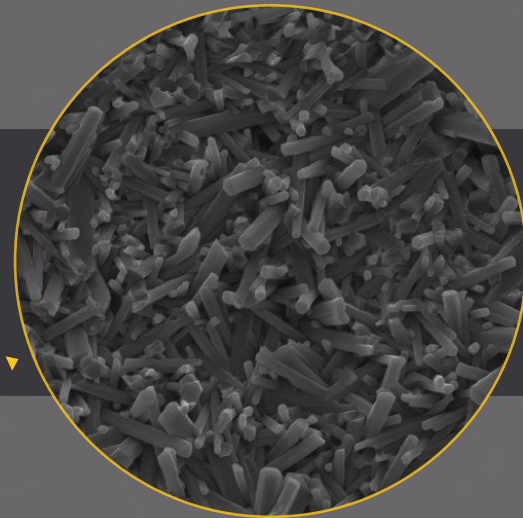
CTL AMERICA
rethink what's possible®

THE IDEAL BIOMATERIAL

CTL AMEDICA'S SILICON NITRIDE

Silicon nitride has the ability to achieve superior new bone growth. Along with anti-microbial properties and enhanced imaging capabilities, silicon nitride is the ideal biomaterial.

Silicon nitride's nano-texture surface at 10 microns ▼



Faster Fusion Rates

Compared to PEEK and titanium, CTL Amedica's silicon nitride demonstrates greater new bone formation¹ and has an innate nanotopography and surface chemistry that provides an optimal environment for bone growth. The surface chemistry initiates bone growth, while the intrinsic nanotopography increases surface area. This combination of initiating bone growth with increased surface area enhances osteoblast response, accelerating the fusion process.

Enhanced Imaging Capabilities

Silicon nitride implants are radiotranslucent with visible boundaries and produce no artifact under CT or MRI; this enables an exact view of the implant for precise intraoperative placement and post-operative fusion assessment.

Proven Bacteriostatic Properties

The negative surface charge of silicon nitride repels bacteria and prevents biofilm formation², reducing the chance of infection. The hydrophilic surface creates a molecular water barrier preventing the adhesion of bacteria.

REFERENCES:

1. Webster TJ, Patel AA, Rahaman MN, et al. Anti-infective and osteointegration properties of silicon nitride, poly(ether ether ketone), and titanium implants. *Acta Biomater.* 2012;8(12):4447-4454. doi: 10.1016/j.actbio.2012.07.038. Epub 2012 Jul 31.
2. Gorth DJ, Puckett S, Ercan B, et al. Decreased bacteria activity on Si₃N₄ surfaces compared with PEEK or titanium. *Int J Nanomedicine.* 2012;7:4829-4840.

©2024 CTL Medical Corporation (d/b/a: CTL Amedica). All rights reserved.
2052 McKenzie Drive, Building 1, Carrollton, TX 75006
P: 214-545-5820 | E: info@ctlmed.com | www.ctlamedica.com
OVR.VIIAL.20200902

